



PANTECH PX-500



USER GUIDE



**Sprint Mobile Broadband Card  
PX-500**

**[www.sprint.com](http://www.sprint.com)**

© 2006 Sprint Nextel. All rights reserved. No reproduction in whole or in part without prior written approval. SPRINT, the "Going Forward" logo, and other trademarks are trademarks of Sprint Nextel.

Printed in the U.S.A.



# Table of Contents

---

<b>Welcome to Sprint</b> .....	<b>i</b>
<b>Introduction</b> .....	<b>ii</b>
<b>Section 1: Sprint Mobile Broadband Card Basics</b> .....	<b>1</b>
<b>1A. Introducing the Sprint Mobile Broadband Card</b> .....	<b>3</b>
Your Sprint Mobile Broadband Card .....	4
CDMA Networks .....	4
Package Contents .....	5
About This Guide .....	6
<b>1B. Getting Started With Your Sprint Mobile Broadband Card</b>	<b>7</b>
Getting Started .....	8
The Sprint Mobile Broadband Card Software .....	8
Care and Maintenance .....	9
<b>1C. Installing the Sprint Mobile Broadband Card</b> .....	<b>11</b>
Getting Started .....	12
Installing the Sprint PCS Connection Manager Software ..	15
Inserting and Removing the Sprint Mobile Broadband Card	17
Activating Your Sprint Mobile Broadband Card .....	21
<b>Section 2: Using the Sprint Mobile Broadband Card</b> ..	<b>23</b>
<b>2A. Sprint PCS Connection Manager</b> .....	<b>25</b>
Sprint PCS Connection Manager .....	26
Starting Sprint PCS Connection Manager .....	27
The Sprint PCS Connection Manager Window .....	28
Taskbar Icons .....	36
Sprint PCS Connection Manager Menu Options .....	38
Accessing Links .....	45
<b>2B. Menu Options</b> .....	<b>47</b>
Overview of Menu Items .....	48
ActivationWizard .....	49

Alert Log .....	49
Connection History .....	50
Device Info & Diagnostics .....	51
Links (Notebook PCs) .....	52
Software Updates .....	52
Settings .....	53
About Sprint PCS Connection Manager .....	53
<b>2C. Troubleshooting Tips .....</b>	<b>55</b>
Problem Causes and Suggestions .....	56
Reinstalling the Sprint Mobile Broadband Card Driver ...	59
Resolving Resource Conflicts .....	64
Using the Menu Tools .....	66
<b>Section 3: Sprint Power Vision<sup>SM</sup> .....</b>	<b>69</b>
<b>3A. Sprint Power Vision .....</b>	<b>71</b>
Web .....	72
Sprint Power Vision FAQs .....	73
<b>Section 4: Technical Specifications and Regulatory Information .....</b>	<b>75</b>
<b>4A. Technical Specifications .....</b>	<b>77</b>
Environmental Specifications .....	78
Mechanical Specifications .....	78
Software Specifications .....	79
Transmitter Specifications .....	80
Receiver Specifications .....	81
Miscellaneous .....	81
Hardware Specifications .....	82
<b>4B. Regulatory Information .....</b>	<b>83</b>
Regulatory Notices .....	84

<b>Section 5: Safety and Terms &amp; Conditions</b> .....	<b>87</b>
<b>5A. Safety and Notices</b> .....	<b>89</b>
Important Notice .....	90
Safety and Hazards .....	91
<b>5B. Terms and Conditions</b> .....	<b>93</b>
Terms and Conditions of Service .....	94
<b>Index</b> .....	<b>107</b>



# Welcome to Sprint

---

**We are committed to bringing you the best wireless technology available, and we built our network right from the start, so no matter where you are on the Nationwide Sprint PCS<sup>®</sup> Network, all your services will work the same.**

When it comes to mobile connectivity, the Sprint Mobile Broadband Card<sup>™</sup> offers more freedom than ever before. No wires, no cables, just access to your data when you need it. The power of the Internet and your company data is truly at your fingertips.

This guide will familiarize you with our technology and with your new Sprint Mobile Broadband Card and Sprint PCS Connection Manager Software<sup>SM</sup> through simple, easy-to-follow instructions.

**Welcome and thank you for choosing Sprint.**

# Introduction

---

This User's Guide introduces you to Sprint PCS Service and all the features of your new wireless Sprint Mobile Broadband Card. It's divided into five sections:

- ◆ **Section 1:** Sprint Mobile Broadband Card Basics
- ◆ **Section 2:** Using the Sprint Mobile Broadband Card
- ◆ **Section 3:** Sprint Power Vision
- ◆ **Section 4:** Technical Specifications and Regulatory Information
- ◆ **Section 5:** Safety and Terms & Conditions

Throughout the guide, you'll find tips that highlight special shortcuts and timely reminders to help you make the most of your new card and service. The Table of Contents and Index will help you locate specific information quickly.

You'll get the most out of your card if you read each section. However, if you'd like to get right to a specific feature, simply go to that page. Follow the instructions in that section and you'll be ready to use your card in no time.

---

**Note:** You can print out this guide to keep on hand or view it online. If you're viewing it online, simply click on a topic in the Table of Contents or on any page reference within a section to go directly to that topic.

---

# Sprint Mobile Broadband Card Basics





# Introducing the Sprint Mobile Broadband Card

---

## In This Section

---

- ◆ **Your Sprint Mobile Broadband Card**
  - ◆ **CDMA Networks**
  - ◆ **Package Contents**
  - ◆ **About This Guide**
- 

This section introduces the basic features and functions of your Sprint Mobile Broadband Card, the materials included with your card, and an overview of the sections in this user's guide.

## Your Sprint Mobile Broadband Card

---

Your Sprint Mobile Broadband Card fits into a Type II PC Card slot (available on most notebook PCs) and functions as a wireless network card.

This card allows you to:

- Access your company network.
- Send and receive email.
- Access the Internet.

## CDMA Networks

---

The Sprint Mobile Broadband Card operates over a type of wireless network called CDMA (Code Division Multiple Access).

To use the Sprint Mobile Broadband Card, you need an account that gives you access to a CDMA network.

Every CDMA network operates on one of three radio frequency bands. The Sprint Mobile Broadband Card PX-500 takes advantage of the high-speed CDMA 1xEV-DO network and operates on the 1900 MHz band.

The Sprint Mobile Broadband Card utilizes CDMA 1xEV-DO technology enabling real-time high-speed wireless access to email, the Internet, or your company network. The card runs on most current Windows-compatible laptop or desktop computers. 1xEV-DO Rev. 0 supports Internet connections with data rates up to 2.4 Mbps (downlink from the network) and 153 kbps (uplink to the network). 1xEV-DO Rev. A supports Internet connections with data rates up to 3.1 Mbps (downlink from the network) and 1.8 Mbps (uplink to the network).

---

**Tip:** More information about CDMA networks is available on the CDMA Development Group Web site, [www.cdg.org](http://www.cdg.org).

---

## A Network Card

The Sprint Mobile Broadband Card is a true network card, functioning just like the network cards familiar to most business computer users. Once installed and configured, the card connects instantly to the CDMA network with just a few mouse clicks. To surf the Web, just insert the card, click a few buttons, and launch the Internet browser. To access your company network, you may need to launch an extranet client that is set up by your company.

---

**Tip:** To optimize speed and data transmission when accessing your company email, work in “Offline” mode and synchronize periodically. Do not use the Preview Pane; save attachments or drag and drop them to a desktop folder before opening them, rather than opening them in the email. For more detailed information, access the Microsoft white paper at <http://www.microsoft.com/office/outlook/evaluation/perform.doc>.

---

## Package Contents

---

Your Sprint Mobile Broadband Card package contains the following components:

- Sprint Mobile Broadband Card PX-500
- Start Here Guide
- User’s Guide and Warranty
- Installation CD containing the Sprint PCS Connection Manager Software

## About This Guide

---

This user's guide is designed to provide you with all the information you need to install and use your Sprint Mobile Broadband Card.

- **Section 1** gives you an overview of the card and its basic features and provides instructions for installing your Sprint Mobile Broadband Card and Sprint PCS Connection Manager Software.
- **Section 2** provides detailed, step-by-step instructions for using the card.
- **Section 3** introduces Sprint Power Vision Services.
- **Section 4** provides electrical, radio frequency, regulatory notices and other specifications for the Sprint Mobile Broadband Card.
- **Section 5** provides important safety and liability information and the Terms and Conditions of use for the Sprint Mobile Broadband Card.

# Getting Started With Your Sprint Mobile Broadband Card

---

## In This Section

---

- ◆ Getting Started
  - ◆ The Sprint Mobile Broadband Card Software
  - ◆ Care and Maintenance
- 

This section describes the basics of getting started with your Sprint Mobile Broadband Card and Sprint PCS Service, and how to maintain your card.

# Getting Started

---

**Before you can begin using your card, you must:**

1. Install the Sprint PCS Connection Manager Software, including the Sprint Mobile Broadband Card driver software.
2. Activate your Sprint PCS account (unless the card has been preactivated).
3. Configure the card to use your account.

## The Sprint Mobile Broadband Card Software

---

**The Sprint Mobile Broadband Card comes with the following software:**

- **Sprint PCS Connection Manager Software** allows you to manage the card's actions and monitor your connections.
- The **driver software** establishes the interface between the card and the Windows® operating system.

The software must be installed before you insert the card for the first time.

## Care and Maintenance

---

As with any electronic device, the Sprint Mobile Broadband Card must be handled with care to ensure reliable operation. Follow these guidelines in using and storing the card:

- Do not apply adhesive labels to the card. They may cause the card to become jammed inside the card slot.
- Do not force the card into your **Type II PC Card** slot. Forcing the card into a slot may damage the connector pins.
- Protect the card from liquids, dust, and excessive heat.
- Store the card in a safe place.
- When moving your computer, always remove the card from the PC Card slot to avoid any damage.



# Installing the Sprint Mobile Broadband Card

---

## In This Section

---

- ◆ Getting Started
  - ◆ Installing the Sprint PCS Connection Manager Software
  - ◆ Inserting and Removing the Sprint Mobile Broadband Card
  - ◆ Activating Your Sprint Mobile Broadband Card
- 

This section guides you through the steps necessary to install your Sprint Mobile Broadband Card and make it operational on a notebook PC.

# Getting Started

---

**Before you can use your new Sprint Mobile Broadband Card, you must first:**

1. Install the Sprint PCS Connection Manager Software, located on the installation CD, onto your computer.

---

**Note:** Do not insert the card into the slot until you have installed the Sprint PCS Connection Manager Software onto your computer or until instructed to do so by the installation CD.

---

2. Insert the card into your computer's **PC Card** slot (Sprint label facing up). Windows will detect the card and automatically install the necessary driver.

---

**Tip:** A driver is a software program that forms the interface between a device (such as the Sprint Mobile Broadband Card) and the operating system on your PC.

---

3. Launch the Sprint PCS Connection Manager.
4. Activate your Sprint Mobile Broadband Card and your Sprint PCS account, unless the card was preactivated. If your card was not previously activated, the Activation Wizard will automatically start and guide you through the process.

## System Requirements

The Sprint Mobile Broadband Card is supported on the following operating systems:

- Windows®2000
- Windows®XP

To install and run the Sprint Mobile Broadband Card and accompanying Sprint PCS Connection Manager Software, your system requires these minimum resources:

CPU	Pentium III (166 MHz or higher)
Card Slots	Type II PC Card Slot (32-bit bus)
Communications Ports	1 available
Disk Drive	CD-ROM
I/O Resources	1 IRQ, 32 bytes I/O space
Memory	64 MB
Disk Space	14 MB

---

## High Encryption Requirements

Depending on your configuration, an IOTA session may automatically start as part of the installation/activation process. IOTA requires high-security 128-bit encryption to establish a secure Internet connection to the CDMA network.

If you are running Windows XP, your computer should already include high security 128-bit encryption.

### If you are running Windows 2000 with Internet Explorer

1. Ensure you have installed the Windows 2000 High Encryption Pack: in Internet Explorer, select **Help > About Internet Explorer**. If you see “Cipher Strength: 128-bit,” then the High Encryption Pack is installed. Proceed to step 2.

If the High Encryption Pack is not installed, download and install it ([www.microsoft.com/windows2000/downloads/recommended/encryption](http://www.microsoft.com/windows2000/downloads/recommended/encryption)).

2. If your version of Internet Explorer is earlier than 5.5, download and install the latest version ([www.microsoft.com/windows/ie/downloads](http://www.microsoft.com/windows/ie/downloads)).

If you are running Windows XP, your computer should already include high security 128-bit encryption.

### If you are running Windows 2000 with Netscape Communicator

Ensure your version of Netscape Communicator is 4.7 or higher.

To verify that your version supports 128-bit encryption:

1. In Navigator, select **Help > About Navigator**.

–or–

In Netscape Communicator, select **Help > About Communicator**.

2. See the section “Contains encryption software from RSA Data Security, Inc.” If the next paragraph states “This version supports U.S. security,” you have 128-bit security. If the paragraph states that you have International security, you have 40-bit security. Download a version that supports 128-bit security.

---

# Installing the Sprint PCS Connection Manager Software

---

Follow the instructions below to install the Sprint PCS Connection Manager Software from the installation CD. This process requires you to restart your PC at the end of the installation; therefore, we recommend that you quit all open applications before you begin the installation. The Sprint PCS Connection Manager Software automatically determines your PC's operating system and installs all appropriate software.

---

**Note:** Administrative privileges may be required for software installation.

---

## Installing the Sprint PCS Connection Manager Software and the Sprint Mobile Broadband Card driver:

1. Insert the installation CD into your CD-ROM drive. The CD should autostart and display a menu.
2. If the CD does not autostart, select **Start > Run** and type **d:\Sprint PCS Connection Manager.msi** (where **d** is the letter of your CD-ROM drive).
3. From the CD start-up window, select **Install Sprint PCS Connection Manager**. This will launch the InstallShield® Wizard.
4. The License Agreement window appears. Read and then click **Yes** to accept the agreement and proceed with the installation.
5. Select **Sprint Mobile Broadband Card** and click **Next** on the "Select your card" screen.

6. Click **Next** to install the software to the default destination folder (recommended). If you need to install the software to a different folder, click **Choose** and select an alternate installation destination.
7. Click **Finish** or **Restart** to complete the installation and launch Sprint PCS Connection Manager.
8. Wait for your PC to reboot.  
For Windows 2000, you may need to restart your PC manually by selecting **Start > Shutdown > Restart**.
9. Click **OK** when you are prompted to insert the Sprint Mobile Broadband Card. Insert the card into the **Type II PC Card** slot.

---

**Note:** Do not force the Sprint Mobile Broadband Card into the slot. Insert the card with the Sprint label facing up.

---

10. Windows will detect the new hardware (Sprint Mobile Broadband Card) and will install the necessary drivers. The **Add New Hardware** Wizard or **Found New Hardware** Wizard will launch, depending on your operating system.
11. Follow the onscreen prompts to allow the wizard to install the drivers.
12. Click **OK** when the installation is complete.

The Sprint PCS Connection Manager Software and the Sprint Mobile Broadband Card driver are now installed and you can proceed to activate your card, if it has not already been activated.

# Inserting and Removing the Sprint Mobile Broadband Card

---

## Inserting the Sprint Mobile Broadband Card

Once you have completed the software installation procedure, you may insert your card into your computer's PC Card slot. The Sprint label should be facing up and the 68-pin connector, located at the thinner end of the card, should be inserted directly into the computer's PC Card slot.

---

**Note:** The Sprint Mobile Broadband Card should fit snugly, but you should be able to insert or remove it easily from your computer's PC Card slot.

---



A portion (the black section) of the card will remain outside the PC Card slot. This section contains the card's antenna and the LED (light emitting diode). Because the card is not entirely contained in your computer's PC Card slot, it is important to remove the card when transporting your notebook or Tablet PC.

When you insert the card, the following should occur:

- If sound effects are enabled, the PC beeps.
- The Unplug/Eject Hardware appears in the system tray, unless the feature has been disabled.



- Sprint PCS Connection Manager starts, unless the autostart feature has been disabled.


The card is powered on as soon as you insert it.

### **Removing Power from the Sprint Mobile Broadband Card**

When the Sprint Mobile Broadband Card is connected to the computer it has power and is trying to communicate with the network. To remove power, Sprint PCS Connection Manager must be closed and the card must be properly ejected from the PC Card slot.

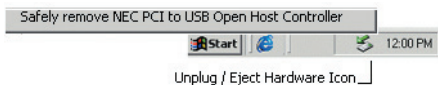
## Removing the Sprint Mobile Broadband Card


### To remove the card:

1. Close Sprint PCS Connection Manager if it is running. There are two ways to close the program:
  - Click the Close icon (  ) on the interface.
  - Right-click the Sprint PCS Connection Manager system tray icon and select **Exit** from the menu.

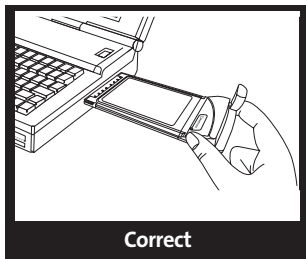


2. Left-click the Unplug/Eject Hardware icon in the system tray. A message bar appears.

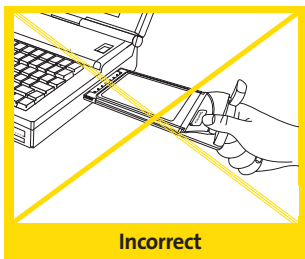


3. Click the entry for “**NEC PCI to USB Open Host Controller**” or “**Standard Enhanced PCI to USB Host Controller.**”
4. If a dialog box appears notifying you that it is safe to remove the card, click **OK**, or click the Close button (  ).
5. Use your computer’s PC Card ejector to eject the Sprint Mobile Broadband Card from the slot.

6. Remove the card from your computer's PC Card slot by gripping both sides of the card and pulling straight out.



When inserting or removing your Sprint Mobile Broadband Card, grip the card by both of its sides.



Do not handle or remove the Sprint Mobile Broadband Card by pulling on the antenna.

# Activating Your Sprint Mobile Broadband Card

---

The final step to making your Sprint Mobile Broadband Card operational is configuring it to use your account.

If you purchased a preactivated Sprint Mobile Broadband Card, you can skip this step.

Otherwise, you must use the Sprint Activation Wizard to activate and configure your account. Activation involves calling Sprint Customer Service, exchanging information, and entering your account information into the appropriate fields in the Activation Wizard.

## To activate an account and configure your Sprint Mobile Broadband Card:

1. Insert the card into your PC Card slot. The Activation Wizard will start automatically.
2. Click **Next** to begin the activation process. Follow the prompts.
3. Call Sprint Customer Service to set up your Sprint PCS wireless network account.
  - If you will be using your Sprint Mobile Broadband Card primarily for business purposes, call 1-888-788-4727.
  - If your card is intended primarily for personal use, call 1-888-715-4588.

You should have the following information available:

- Your billing address
- Your Social Security or Tax ID number
- Your driver's license number
- Your Sprint Mobile Broadband Card's electronic serial number (ESN) (The ESN is printed on the card's label and is displayed during the installation process.)
- A pen and paper to write down your account information

Inform your Sprint Customer Service Specialist that you are activating a Sprint Mobile Broadband Card PX-500. Sprint Customer Service will help you choose a service plan and guide you through the activation process.

4. Click **Next** when you are asked for your card's ESN. A third window will open and display your card's ESN in the top field.
5. Provide the ESN to the Service Representative and you will be given an activation code.
6. Enter the activation code into the bottom field of the window and click **Next** to continue.
7. You will also be given a phone number. Enter the number in the top and bottom fields and click **Next** to continue.

---

**Note:** If the phone numbers you enter into the top and bottom fields do not match, a warning will appear requesting that you verify that the phone numbers are correct.

---

8. Your phone number and lock code will be displayed at the bottom of the final activation window. Click **Finish** to exit the Sprint Activation Wizard.

Your Sprint Mobile Broadband Card is ready for use.

# Using the Sprint Mobile Broadband Card





# Sprint PCS Connection Manager

---

## In This Section

---

- ◆ **Sprint PCS Connection Manager**
  - ◆ **Starting Sprint PCS Connection Manager**
  - ◆ **The Sprint PCS Connection Manager Window**
  - ◆ **Taskbar Icons**
  - ◆ **Sprint PCS Connection Manager Menu Options**
  - ◆ **Accessing Links**
- 

This chapter outlines Sprint PCS Connection Manager for your notebook PC, including the components of the main window, button usage, system tray icons, and more. Once you've mastered the basics here, you'll be ready to begin using your card.

## Sprint PCS Connection Manager

---

Sprint PCS Connection Manager allows you to manage and monitor the connection between your Sprint Mobile Broadband Card and the CDMA network. Use the Sprint PCS Connection Manager to:

- Determine your signal strength, roaming status, Sprint PCS Vision availability, and other network parameters.
- Initiate data calls.
- View call statistics.
- Enable or disable features.
- Set options related to sounds, and the security lock code.

You must run Sprint PCS Connection Manager anytime you use the Sprint Mobile Broadband Card.

# Starting Sprint PCS Connection Manager

To start Sprint PCS Connection Manager:

- ▶ Double-click the Sprint PCS Connection Manager icon, located on your desktop.




—or—

- ▶ Select **Start > Programs > Sprint > Pantech > Sprint PCS Connection Manager**

Sprint PCS Connection Manager will also start automatically when the Sprint Mobile Broadband Card is inserted. This depends on the settings in Windows Operating System.

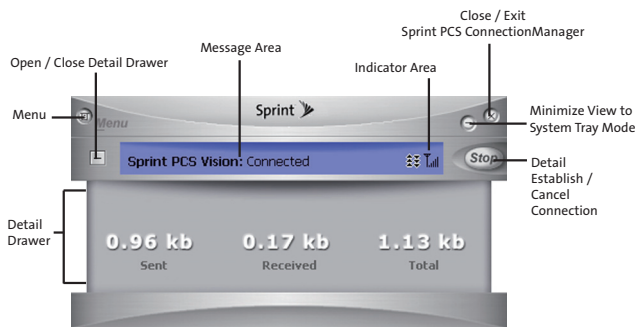
Once Sprint PCS Connection Manager shows a connection, you can start your Web browser or email application.

To exit Sprint PCS Connection Manager, use the Close button (  ) in the upper-right corner.

# The Sprint PCS Connection Manager Window

Sprint PCS Connection Manager features its own custom window. It includes the following components:

- A Menu button in the upper-left corner.
- Minimize and Close buttons in the upper-right corner.
- A signal strength indicator to the immediate right of the message area.
- A “GO” or “Stop” button used to establish or cancel a connection.
- A Detail Drawer that displays the amount of data being transferred and received.

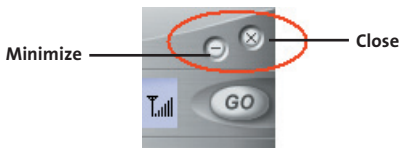


## About the Interface

The following application functions are available within the main window of Sprint PCS Connection Manager:

- Close: Closes the interface and exits the program.
- Go: Initiates a connection.
- Stop: Ends or cancels a connection.
- Minimize: Minimizes the interface to System Tray Mode.
- Menu: Provides access to tools and settings.
- Message Area: Displays “Insert your card,” “Disconnect,” “Connect,” “Connecting,” or “Connected” states.
- Image Compression (if applicable): Indicates the relative speed of your Sprint PCS Vision connections.
- Transfer/Receive: Visual indicator of data activity.
- Signal Strength: Visual indicator of signal strength.
- Detail Drawer: Displays the number of bytes sent and received. Click “+” to expand and “–” to close.

## The Minimize and Close Buttons



The Minimize button closes the program window but leaves the program running, and puts its icon in the system tray. (See page 36.)

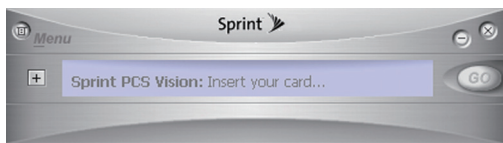
To redisplay the program, double-click the desktop shortcut or launch the card software from the Start menu. (See page 27.) You can also click the icon in the system tray. The Close button is used to exit the program.

## Connection Status

The Sprint PCS Connection Manager screen displays messages that show the status of your current connection. Each status message is explained below.

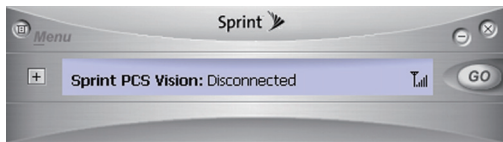
### Insert your card

This status message is displayed if Sprint PCS Connection Manager fails to detect a Sprint Mobile Broadband Card. While in this state, the **GO** button is disabled (grayed out) and cannot be clicked, and the signal strength icon is not visible.



### Disconnected

This status message is displayed when Sprint PCS Connection Manager detects a Sprint Mobile Broadband Card but a connection has not been established. It signifies that Sprint PCS Connection Manager is ready to connect to the network.

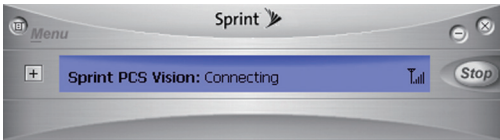


The **GO** button is enabled and the signal strength icon is visible. Click **GO** to initiate a connection.

If a Dial-up Networking connection is also available, the **GO** submenu will display a list of all available connections. The connection type (Sprint PCS Vision or Dial-up Networking) appears on the left with the connection name to its right. Duplicate connections appear only once.

## Connecting


This status message is displayed when Sprint PCS Connection Manager is attempting to make a connection. The status message will change from “Connecting” to “Authenticating” to “Authenticated.” The signal strength icon is visible and the **GO** button changes to **Stop**.

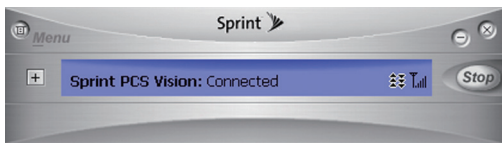


If you attempt to establish a Sprint PCS Vision connection that requires a password or a Dial-up Networking connection requiring a remote login and password, a dialog box will open. Enter the relevant information and click **OK** to continue the connection process.

To cancel the connection, click **Stop**.

## Connected

This status message is displayed when a connection has been established. The signal strength icon is visible and the transfer/receive icon  appears, displaying the rate of data transfer.



Click **Stop** to disconnect.






For other messages, see “Troubleshooting Tips” on page 55.

## Indicator Area

The indicator area displays icons that help you keep track of your signal strength and roaming status, notify you when you receive messages, and indicate whether certain options or features are enabled.

The following table lists the indicator area icons and explains the significance of each icon.

## Indicator Area Icons

Icon	Meaning
	<p>The signal strength icon uses bars to show the strength of the radio signal. As the signal strength increases, the number of bars increases, up to a maximum of four bars.</p> <p><b>Note: This icon is displayed only when data services are available.</b></p>
	<p>The no bars icon indicates that no connection exists. This can be due to any of the following reasons:</p> <ul style="list-style-type: none"><li>▶ No antenna is attached.</li><li>▶ You are outside of the Nationwide Sprint PCS Network service area.</li><li>▶ The signal strength is too weak.</li><li>▶ A network or account problem is preventing the Sprint Mobile Broadband Card from obtaining service.</li></ul>
	<p>The Transmit/Receive indicator lets you know that there is an active data connection.</p>
	<p>The Sprint Mobile Broadband Card is in the 1X service area.</p>
	<p>The Sprint Mobile Broadband Card is out of the home area.</p>

## The GO Button

The **GO** button is used to establish and cancel a connection. The text on the button changes during the connection stages.








- **GO**—Ready to establish a connection. Click the button to start a connection (if only one is defined) or to display a list from which you can select a connection (if more than one connection is defined).
- **Stop**—Once a connection is established, the **GO** button changes to **Stop**. A connection is being established or is already established. Click the button to cancel or disconnect.

## Taskbar Icons

---

Sprint PCS Connection Manager displays an icon in the system tray, which is normally located in the lower-right portion of the computer screen. The system tray icon shows your connection status.

Icon	Meaning
	Connecting – Your Sprint Mobile Broadband Card is ready to connect or is currently making a connection.
	Connected – A connection has been established to the Nationwide Sprint PCS Network and a data transfer is in process.
	Dormant – A connection has been established but no data transfer is taking place.
	Disconnected – Sprint PCS Connection Manager is running, but no connection is in progress.
	Error – Sprint PCS Connection Manager has encountered a hardware failure or other error while attempting to connect.

## Establishing and Terminating Connections

Sprint PCS Connection Manager is used to establish and terminate connections with the Sprint Mobile Broadband Card.

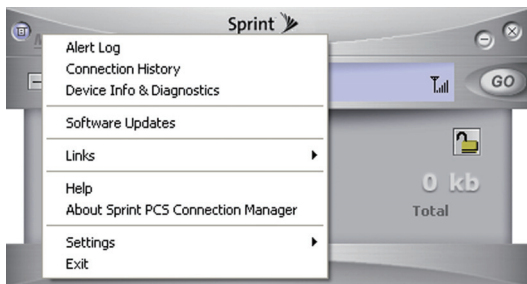
### Managing Connections

With Sprint PCS Connection Manager, you can create a new Sprint PCS Vision connection, a Dial-up Networking connection, or edit a previously created connection. New Sprint PCS Vision connections can be stored on your computer along with any existing Dial-up Networking connections.

# Sprint PCS Connection Manager Menu Options

---

Sprint PCS Connection Manager has a secondary menu that you can open by clicking on the Menu button, located at the upper left of the screen as shown below. In this section, the menu options are explained.



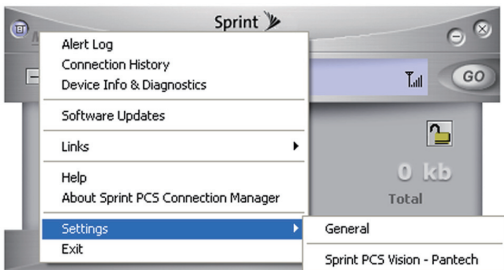
## Settings

This menu option allows you to configure PCS Connection Manager to your preferences. The Settings option allows you to enable or disable various program features.

### To access Settings:

1. Click **Menu** on the Sprint PCS Connection Manager interface.
2. Select **Settings** from the submenu.

### Access Settings



## General

Set general Sprint PCS Connection Manager settings by checking or unchecking the insert options:

- **Play sound effects** – Select this check box to play a clicking sound whenever an action is made.
- **Always on top** – When checked, the Sprint PCS Connection Manager window remains on top of all other open application windows.
- **Start in system tray** – Select this check box to have the Sprint PCS Connection Manager icon visible on your computer screen.
- **Keep Connection History** – Select this to log all connections.
- **Launch when Windows Starts** – Select this to launch Sprint PCS Connection Manager automatically on startup.

## Software Updates

It is recommended that you check for updates to the Sprint PCS Connection Manager software regularly, for the latest features and network enhancements. Place a check mark in the “**Check for updates once per month**” option for automatic updates or click **Check Now** for immediate updates.

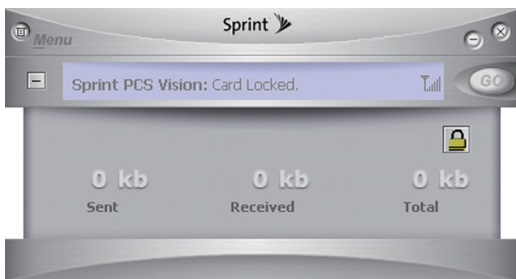
## Sprint PCS Vision - Pantech

**Settings > Sprint PCS Vision - Pantech** opens a dialog box that allows you to set the behavior of your Sprint Mobile Broadband Card.

- Select the **Always show Welcome Screens** check box if you would like to have a welcome screen appear upon a successful connection to the Sprint PCS Vision network.
- Select the **GO automatically when ready** check box to automatically connect to the Nationwide Sprint PCS Network after Sprint PCS Connection Manager starts and senses a compatible Sprint PCS device.
- **Mode** supports three different types of data call modes: **Automatic**, **EVDO Only**, and **1xRTT Only**. When **Automatic** is selected, the currently available mode is set automatically. When **EVDO Only** is selected, only the EVDO mode is provided. When **1xRTT Only** is selected, only the 1xRTT mode is provided.
- **Roaming** supports three different roaming options: **Sprint**, **Automatic**, and **Roam Only**. When **Sprint** is selected, roaming is disabled. When **Automatic** is selected, roaming is automatically enabled if Sprint service is not available. When **Roam Only** is selected, only roaming is enabled. (When the **Roam Guard** check box is selected, an extra step is required before the card will enter roaming mode.)
- The **Activation Wizard** is used only when activating a new Sprint PCS device.
- The **User Lock Change** enables you to change and customize your User Lock Code.

## Lock Code

The Lock Code feature can be used to prevent others from using your Sprint Mobile Broadband Card and your account. When the lock code is enabled, the message area will display “Card Locked” and the lock icon will appear in the indicator area.



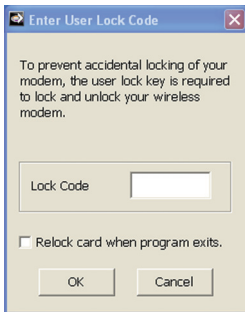
While the card is in lock mode, you may not launch a data session without first entering your four-digit lock code. The default lock code is the last four digits of your Sprint Mobile Broadband Card phone number.

## To enable the lock feature

1. Click the Locked/Unlocked icon located in the Detail Drawer of the Sprint PCS Connection Manager interface. (This icon is visible only when the card is disconnected.)



2. The Enter Lock Code window appears.



3. Enter your lock code and click **OK**.

---

**Tip:** Your default lock code is the last four digits of your Sprint Mobile Broadband Card's phone number. If you can't recall your card's phone number, go to **Menu > Device Info and Diagnostics** or call Sprint Customer Service at 1-888-211-4PCS (4727).

---

- ▶ To change your lock code, access the Settings window. Select **Menu > Setting > Sprint PCS Vision - Pantech** and click **User Lock Change**. Enter your new lock code in the first field and confirm it by re-entering it into the second field.

---

**Note:** Running the Activation Wizard resets the lock code to the last four digits of the most recently activated phone number.

---

- ▶ Select a lock status: **Unlock** to leave the Sprint Mobile Broadband Card unlocked; **Lock Now** to enable the lock code feature immediately; and **Lock On Power Up** to enable the lock code feature the next time the card powers up.
- ▶ Click **OK** to save changes and close the Settings dialog box.

## Accessing Links

---

For your convenience, Sprint incorporates links to select Sprint PCS products and services from within the Sprint PCS Connection Manager menu. To access these links:

1. Click **Menu** on the Sprint PCS Connection Manager interface.
2. Select **Links** from the submenu.
3. Select **Sprint PCS Web Site**.

---

**Note:** The Sprint PCS Connection Manager Links menu does not allow you to add or remove links. Manage your direct links through your Web browser.

---



# Menu Options

---

## In This Section

---

- ◆ Overview of Menu Items
  - ◆ ActivationWizard
  - ◆ Alert Log
  - ◆ Connection History
  - ◆ Device Info & Diagnostics
  - ◆ Links (Notebook PCs)
  - ◆ Software Updates
  - ◆ Settings
  - ◆ About Sprint PCS Connection Manager
- 

This chapter provides an overview and brief description of each menu option you may encounter while using your Sprint Mobile Broadband Card and Sprint PCS Connection Manager.

# Overview of Menu Items

---

The following table outlines various menu items and provides a brief description and links to locate more detailed information within this guide.

## Menu Items

Menu Item	Description	For more information, see:
<b>Go (Connect)</b>	Establish a data connection.	Page 35
<b>ActivationWizard</b>	Configure the card to use your Sprint PCS Wireless Network account.	Page 49
<b>AlertLog</b>	View information about card errors or failures by date/time, alert, connection name, and type.	Page 49
<b>ConnectionHistory</b>	View information on data connections by date/time, number dialed, and type.	Page 50
<b>Device Info &amp; Diagnostics</b>	View detailed information about the Sprint Mobile Broadband Card, software, and connections.	Page 51
<b>Links</b>	When connected to the Nationwide Sprint PCS Network, provides links to the Sprint PCS Web site.	Page 52
<b>Software Updates</b>	Check for posted updates to the Sprint PCS Connection Manager Software or configure to automatically check for updates.	Page 52
<b>Settings</b>	Configure Sprint PCS Connection Manager to best suit your needs and preferences.	Page 53

Menu Item	Description	Formore information, see:
About Sprint PCS Connection Manager	View the opening Sprint PCS Connection Manager identification screen.	Page 53
Close	Close Sprint PCS Connection Manager.	Page 30

## Activation Wizard

The Activation Wizard is used to configure the Sprint Mobile Broadband Card to use with your account. An overview of this process is provided. Specific instructions for using the Activation Wizard begin on page 21.

## Alert Log

The Alert Log provides a record of all alerts that have been generated while establishing and maintaining your connections and settings. You can use the Alert Log to help isolate and resolve connection issues.

### To display the Alert Log:

- ▶ Select **Menu > Alert Log**

### To clear the Alert Log:

1. From the Alert Log window, click **Clear**.
2. You will see a prompt: “Clear all entries from the Alert Log?” Click **Clear** to delete all records. Click **Cancel** to cancel.

# Connection History

---

The Connection History maintains a record of your data connections. In the Settings window (displayed when you select **Menu > Settings**) on the General tab, you can choose whether or not to keep a connection history.

## To enable or disable Connection History (notebook PCs):

- ▶ Select **Menu > Settings > General > Keep Connection History**.

A check mark next to the option indicates that it is enabled.

## To display the Connection History:

- ▶ Select **Menu > Connection History**.

For each message, the Connection History displays:

- The date and time the connection was initiated.
- The type of connection (Sprint PCS Vision connection).

## Deleting Records

### To delete all records in the Connection History:

1. From the Connection History window, click **Clear**.
2. You will see a prompt: “Clear all entries from the Connection History?” Click **Clear** to delete all records. Click **Cancel** to cancel.

## Device Info & Diagnostics

---

The Device Info & Diagnostics window displays detailed information about your Sprint Mobile Broadband Card, Sprint PCS Connection Manager, signal strength, port configuration, and more. The information displayed in this window includes:

- The manufacturer.
- Sprint Mobile Broadband Card model: **PX-500**.
- The hardware version.
- The version of software in use.
- The Sprint PCS Connection Manager Software version and build.
- The version of the PRL (Preferred Roaming List, which specifies the radio frequency channels that the card is permitted to use).
- The card's designed capabilities and coverage.
- Various communication and card tests and results.

**To access the Device Info & Diagnostics menu:**

- ▶ Select **Menu > Device Info & Diagnostics**.

## Links (Notebook PCs)

---

During an active Sprint PCS Vision connection, this menu option provides hyperlinks to the Sprint PCS Web site ([www.sprint.com](http://www.sprint.com)). To access links, select **Menu > Links > Sprint PCS Web Site**.

---

**Note:** The Sprint PCS Connection Manager Software Links menu does not allow you to add or remove links. Continue to manage direct links to your favorite Web sites through your Web browser menu.

---

## Software Updates

---

From time to time, Sprint may release updates for your Sprint PCS Connection Manager Software. These updates may add new features or improve the network performance. This menu option allows you to check for any posted updates or to set up an automatic monthly check for updates.

**To check for software updates:**

- ▶ Select **Menu > Software Updates > Check Now**.

**To enable or disable automatic monthly checks:**

- ▶ Select **Menu > Software Updates > Check for updates once per month**.

A check mark next to the option indicates that it is enabled. Click **OK** to save changes and exit the Software Updates dialog box.

## Settings

---

The Sprint PCS Connection Manager settings menu allows you to configure a variety of general and advanced settings for your Sprint PCS Connection Manager.

### Always on Top (Notebooks Only)

When “Window always on top” is enabled, the Sprint PCS Connection Manager is displayed in front of all other application windows, even when you position another window over the Sprint PCS Connection Manager. This allows you to view connection status indicators while using another application, such as your Internet browser.

**To enable or disable Always on top:**

- ▶ Select **Menu > Setting > General > Always on top.**

A check mark next to the option indicates that it is enabled.

### About Sprint PCS Connection Manager

---

The About Sprint PCS Connection Manager menu option allows you to display the Sprint PCS Connection Manager opening splash screen, which appears when you start Sprint PCS Connection Manager.

**To open About Sprint PCS Connection Manager:**

- ▶ Select **Menu > About Sprint PCS Connection Manager.**



# Troubleshooting Tips

---

## In This Section

---

- ◆ Problem Causes and Suggestions
  - ◆ Reinstalling the Sprint Mobile Broadband Card Driver
  - ◆ Resolving Resource Conflicts
  - ◆ Using the Menu Tools
- 

This section provides assistance in diagnosing and solving many common problems you may experience while using your Sprint Mobile Broadband Card and Sprint PCS Connection Manager Software with your notebook PC.

## Problem Causes and Suggestions

---

When properly installed, the Sprint Mobile Broadband Card is a highly reliable product. Most problems are caused by one of these issues:

- The wrong driver has been installed.
- System resources required by the card are being used by other devices.
- Network coverage is not available, either because you are outside the Nationwide Sprint PCS Network or because of an account or network problem.

This section describes how to diagnose and solve these and other problems. If, after reading this section, you are unable to resolve a problem, visit [www.sprint.com](http://www.sprint.com) or contact Sprint Customer Service at 1-888-211-4PCS (4727).

### Error: Searching for Sprint Mobile Broadband Card...

Possible Causes	Suggestions
<p>a. The card is not completely inserted into the PC Card slot.</p> <p>b. The wrong driver is installed for the card.</p> <p>c. There is a resource conflict.</p>	<p>a. Eject and reinsert the card.</p> <p>b. See “Reinstalling the Sprint Mobile Broadband Card Driver” on page 59.</p> <p>c. See “Resolving Resource Conflicts” on page 64.</p>

## Error: Splash Screen is Frozen

Possible Causes	Suggestions
You may have a resource conflict.	Restart your PC. If you are unable to resolve this problem by restarting your PC, see “Resolving Resource Conflicts” on page 64.

## Error: Not in Service

Possible Causes	Suggestions
<p>Inadequate signal strength may occur for any of these reasons:</p> <ul style="list-style-type: none"><li>a. You are outside the Nationwide Sprint PCS Network.</li><li>b. Your antenna is not attached or is pointed in the wrong direction.</li><li>c. You may be inside a building or near a structure that is causing radio interference.</li></ul>	<ul style="list-style-type: none"><li>a. Verify that you are within the Nationwide Sprint PCS Network. Coverage maps are available at <a href="http://www.sprint.com">www.sprint.com</a>.</li><li>b. Ensure your antenna is properly attached and is perpendicular to the card. Reorient your antenna.</li><li>c. Change your location.</li></ul>

## Error: Unable to prepare data services (Windows® 2000)

Possible Causes	Suggestions
High-security 128-bit upgrades are required for IOTA execution.	Perform upgrades as described in the release notes. Upgrades may be downloaded from:  Windows 2000 High Encryption Pack: <a href="http://www.microsoft.com/windows/2000/downloads/recommended/encryption/default.asp">http://www.microsoft.com/windows/2000/downloads/recommended/encryption/default.asp</a> .

## Error: Connection Gets Dropped

Possible Causes	Suggestions
The connection properties are not optimal.	<ol style="list-style-type: none"><li>1. Windows XP: Click <b>Start &gt; Connect To &gt; Sprint PCS Vision Connection</b> Windows 2000: Click <b>Start &gt; Settings &gt; Network and Dial-Up Connections &gt; Sprint PCS Vision Connection</b></li><li>2. Click <b>Properties</b>.</li><li>3. Click the <b>Networking</b> tab.</li><li>4. Click <b>Settings</b>.</li><li>5. Ensure that <b>Enable LCP Extensions</b> and <b>Negotiate multi-link for single-link connections</b> are not selected.</li><li>6. Click <b>OK</b>.</li></ol>

# Reinstalling the Sprint Mobile Broadband Card Driver

---

There is a Sprint Mobile Broadband Card driver for each supported Windows operating system. Unless the appropriate driver for your version of Windows is installed, you will not be able to establish a network connection with the card. This section provides instructions on verifying that you have the correct card driver installed.

---

**Note:** The Sprint Mobile Broadband Card installation CD is required to complete this procedure.

---

## Windows® 2000

**To verify that the correct driver is installed:**

1. Locate the existing driver.
2. Update the driver.

**To locate the driver:**

1. Close all Windows programs and open the Control Panel by selecting **Start > Settings > Control Panel**.
2. Double-click the **System** icon.
3. Click the **Hardware** tab.
4. Click the **Device Manager** button.

5. Locate the Sprint Mobile Broadband Card entries by clicking the “+” signs to expand the listings. (For example, to see all the installed modems, click the “+” sign to the left of **Modems**.) The card should have three entries:
  - The card should display under Multifunction adapters as **PANTECH PC Card Parent**.
  - The card should display under Modems as **PANTECH PC Card**.
  - The card should display under Network adapters as **PANTECH PC Card Modem Adapter**.

If the listings above do not appear, eject the card. Reinsert the card again to cause the driver listing to reappear. Identify the entry for the Sprint Mobile Broadband Card by observing which entry is affected when the card is ejected and reinserted.

### Updating the Driver

1. If the installation CD is not already in your CD-ROM drive, insert it. If the CD start-up menu appears, use the exit option in the lower-left corner of the screen to exit the menu.
2. Right-click **PANTECH PC Card Parent**.
3. Click the **Properties** button.
4. Click the **Driver** tab.
5. Click the **Update Driver** button to start the Update Device Driver Wizard.
6. Click **Next**.
7. Select **Display a list of known drivers for this device so that I can choose a specific driver** and click **Next**.

8. Click the **Have Disk** button.
9. Enter **d:\Drivers\Win2K** (where **d** is the letter of your CD-ROM drive).
10. Click **OK**.
11. If the “Digital Signature Not Found” window is displayed, click **Yes**.
12. Click **Finish**. Repeat steps 6-12 as prompted.

If you are prompted to restart your PC, click **Yes**. Otherwise, restart your PC from the Start menu. (You must restart your PC to complete the driver installation.)

The correct driver should then be installed.

## Windows® XP

**To verify that the correct driver is installed:**

1. Uninstall the existing driver.
2. Install the Windows XP driver from the Sprint Mobile Broadband Card installation CD.

**To uninstall the existing driver:**

1. Open the Control Panel by selecting **Start > Control Panel**.
2. If “Pick a Category” is displayed, select **Switch to Classic View**.
3. Double-click the **System** icon.
4. Click the **Hardware** tab.
5. Click the **Device Manager** button.

6. Locate the Sprint Mobile Broadband Card entries by clicking the “+” signs to expand the listings. (For example, to see all the installed modems, click the “+” sign to the left of **Modems**.) The card should have three entries:

- The card should display under Multifunction adapters as **PANTECH PC Card Parent**.
- The card should display under Modems as **PANTECH PC Card**.
- The card should display under Network adapters as **PANTECH PC Card Modem Adapter**.

If the listings above do not appear, identify the listing for the Sprint Mobile Broadband Card by ejecting the card. This causes the driver listing for the card to disappear from the list. Reinsert the card again to cause the driver listing to reappear. Identify the entry for the Sprint Mobile Broadband Card by observing which entry is affected when the card is ejected and reinserted.

7. Right-click **PANTECH PC Card Parent**.
8. Select **Uninstall** from the pop-up menu.
9. Click **OK** to confirm the uninstall.

The Sprint Mobile Broadband Card listings should be removed.

## Installing the Windows XP Sprint Mobile Broadband Card Driver

1. If the installation CD is not already in your CD-ROM drive, insert it. If the CD start-up menu appears, use the exit option in the lower-left corner of the screen to exit the menu.
2. Eject and reinsert the Sprint Mobile Broadband Card to start the Found New Hardware Wizard.
3. Select **Install from a list or specific location (Advanced)** on the first window of the Found New Hardware Wizard and click **Next** to proceed.
4. Select the **Search for the best driver in these locations** radio button and the **Include this location in the search** check box, and then enter **d:\Drivers\WinXP** (where **d** is the letter of your CD-ROM drive). Click **Next** to proceed to the next window.
5. If a warning appears stating that Sprint Mobile Broadband Card has not passed Windows Logo testing, click **Continue Anyway**.
6. Click **Finish** and repeat steps 1–5 as prompted.

The correct driver should now be installed.

# Resolving Resource Conflicts

---

**Note:** The Sprint Mobile Broadband Card installation CD is required to complete this procedure.

---

The Sprint Mobile Broadband Card requires these system resources:

- **1** IRQ
- **32** bytes of I/O space
- **1** available communications port

If these resources are not available for the card, you have a resource conflict. If another PC Card is installed, you may be able to free the resources simply by ejecting the other device. Otherwise, you may need to disable other devices, such as an internal modem, infrared device, or network card to resolve the resource conflict. This section explains how to disable other devices.

## Windows® 2000

**To resolve a resource conflict in Windows 2000:**

- ▶ Disable a device (internal modem, infrared device, or network card).

### **Disabling an Internal Modem, Infrared Device, or Network Card**

1. Close all Windows programs and open the Control Panel by selecting **Start > Settings > Control Panel**.
2. Double-click the **System** icon.
3. Click the **Hardware** tab.
4. Click the **Device Manager** button.

5. Locate the device that you want to disable:
  - If you want to disable an internal modem, expand the Modem tree by clicking the “+” sign to its left.
  - If you want to disable an infrared device, expand the Infrared Devices tree by clicking the “+” sign to its left.
  - If you want to disable a network card, expand the Network Adapters tree by clicking the “+” sign to its left.
6. Right-click the device you want to disable, choose **Disable** from the pop-up menu that appears, and click **OK**.

## Windows® XP

### To resolve a resource conflict in Windows XP:

- ▶ Disable a device (internal modem, infrared device, or network card).

### Disabling an Internal Modem, Infrared Device, or Network Card

1. Close all Windows programs and open the Control Panel by selecting **Start > Settings > Control Panel**.
2. Double-click the **System** icon.
3. Click the **Hardware** tab.
4. Click the **Device Manager** button.
5. Locate the device that you want to disable:
  - If you want to disable an internal modem, expand the Modem tree by clicking the “+” sign to its left.
  - If you want to disable an infrared device, expand the Infrared Devices tree by clicking the “+” sign to its left.
  - If you want to disable a network card, expand the Network Adapters tree by clicking the “+” sign to its left.

6. Right-click the device you want to disable, choose **Disable** from the pop-up menu that appears, and click **OK**.

## Using the Menu Tools

---

### Connection History

Connection History provides you with a detailed record of the connections established, while using your Sprint Mobile Broadband Card. It allows you to sort records by connection name, so you can easily distinguish between personal and business usage.

#### Accessing Connection History

- ▶ Select **Menu > Connection History** from the Sprint PCS Connection Manager interface.

#### About Connection History

The Connection History window displays a table with three columns: Date/Time, Type, and Duration.

You can select entries by using the arrow keys or your mouse. Selected entries are highlighted. By default, no entry is selected.

Click the **Clear** button to access the Clear Connection History dialog box. Click **Yes** to confirm the delete or **No** to cancel.

#### To generate a text file containing your Connection History:

1. Select **File > Export** from the Sprint PCS Connection Manager Connection History Window. A **Save As** dialog box appears.
2. In the file name box type a name for the CSV log file and click **Save**. The file name is called "Connection Log.txt" by default; however, you can name the file any descriptive name you like.

## Alert Log

The Alert Log provides a record of all alerts that have been received during your connections. It is also useful for troubleshooting connection issues.

### Accessing the Alert Log

- ▶ Select **Menu > Alert Log** from the Sprint PCS Connection Manager interface.

### About the Alert Log

The Alert Log displays a table with four columns: Date/Time, Alert, Connection Name, and Type. Select the entry by using the arrow keys on your keyboard or your mouse. When the entry is selected, it is highlighted. Clicking on the **Clear** button will give you the option to clear the history. Click **Clear** to confirm deletion or **Cancel** to cancel.

## Device Info & Diagnostics

Device Info & Diagnostics is a program that helps identify problems associated with connecting to the Nationwide Sprint PCS Network. It evaluates issues with the USB port, port configuration, signal strength, battery status, the Nationwide Sprint PCS Network, and more. After the program runs a diagnostic check, it can recommend possible solutions.

### Accessing Diagnostics

- ▶ Select **Menu > Device Info & Diagnostics** from the Sprint PCS Connection Manager interface.

## **About Device Info & Diagnostics**

The Device Info & Diagnostics dialog box allows you to select a number of ways to troubleshoot or obtain more information about your Sprint Mobile Broadband Card. The tests automatically run when the window opens.

# Sprint Power Vision<sup>SM</sup>





# Sprint Power Vision

---

## In This Section

---

- ◆ **Web**
  - ◆ **Sprint Power Vision FAQs**
- 

Sprint Power Vision brings clarity you can see and hear, with enhanced, always-on, advanced multimedia services like email and Web browsing. They are easy to learn and simple to use. This rich, colorful graphic experience is a revolutionary way to look at wireless communications.

# Web

---

## Accessing the Web

To access the Web:

1. Start Sprint PCS Connection Manager by double-clicking the icon on your desktop.
2. Click **GO** to launch your Sprint Power Vision connection.
3. Once your Sprint Power Vision connection is established, you may launch your browser application (for example, Internet Explorer or Netscape Navigator).

## Your User Name

When you buy a Sprint Mobile Broadband Card and sign up for service, you're automatically assigned a user name. Your user name identifies you on the Nationwide Sprint PCS Network and is also an address for email and text messaging.

When a user name is assigned, it is typically based on the customer's name and a number, followed by "[@sprintpcs.com](mailto:@sprintpcs.com)." For example, the third John Smith to sign up for Sprint Power Vision services might have [jsmith003@sprint.com](mailto:jsmith003@sprint.com) as his user name. If you want a particular user name, you can visit [www.sprint.com](http://www.sprint.com) and get the name you want—as long as nobody else has it.

Your user name will be automatically programmed into your Sprint Mobile Broadband Card. You don't have to enter it.

# Sprint Power Vision FAQs

---

## **How will I know when my Sprint Mobile Broadband Card is ready for Sprint PowerVision service?**

Your user name (for example, [bsmith001@sprint.com](mailto:bsmith001@sprint.com)) will be displayed on the Sprint PCS Connection Manager display screen.

## **How do I sign in for the first time?**

You are automatically signed in to Sprint Power Vision services when you start Sprint PCS Connection Manager.

## **How do I know when my Sprint Mobile Broadband Card is connected to Sprint Power Vision services?**

Your Sprint Mobile Broadband Card automatically connects when Sprint Power Vision service is used or an incoming message arrives.

## **When is my data connection active?**

Your connection is active when data is being transferred and “Connected” appears on the Sprint PCS Connection Manager display screen.

## **When is my data connection dormant?**

If no data is transmitted or received for approximately 10 seconds, the connection goes dormant. (The connection can go active again quickly.) If no data is transmitted or received for an extended period of time, the connection will terminate.

## **Can I sign out of data services?**

You can sign out without turning off your Sprint Mobile Broadband Card; however you will not be able to browse the Web or use other Sprint Power Vision services. You may sign in again at any time. To sign out, go to **Settings > Internet > Sign Out** in the Sprint PCS Connection Manager menu.

## **How can I optimize my settings to achieve faster speeds and send and receive less data while dialing into my company network?**

For optimized results, work in “Offline” mode and synchronize periodically to send and receive company email. Also, save attachments or drag them into desktop folders before opening them (rather than double-clicking them in the email). For more detailed information, see the Microsoft white paper at <http://www.microsoft.com/office/outlook/evaluation/perform.doc>.

**Technical Specifications  
and  
Regulatory Information**





# Technical Specifications

---

## In This Section

---

- ◆ Environmental Specifications
  - ◆ Mechanical Specifications
  - ◆ Software Specifications
  - ◆ Transmitter Specifications
  - ◆ Receiver Specifications
  - ◆ Hardware Specifications
  - ◆ Miscellaneous
- 

This section outlines the environmental and technical specifications for your new Sprint Mobile Broadband Card.

## Environmental Specifications

---

Operating temperature	-20° C to +60° C
Storage temperature	-40° C to +85° C
Humidity	90% RH @ 70° C, 88 hours
Vibration stability	5 Hz to 500 Hz, 3.1 G
Drop	1 m drop, 6 face, 2 cycle
Contact discharge (Level 2)	8 kv
Air discharge (Level 3)	15 kv

## Mechanical Specifications

---

Dimensions (W x D x H)	54 mm x 12.9 mm x 116 mm
Weight	50 g
Battery Pack	N/A
Power Button	No support
Headset Jack	No support
LED	Yes (Green/Red)
Antenna	Embedded Dual Band RX Diversity Antenna

## Software Specifications

CDMA specification	1xEVDO
Data service	Support
FAX	No support
IOTA	Support
OTASP (IS-683A)	Support
OTAPA (IS-683A)	Support
PRL (preferred roaming list)	Support
Authentication	Support
Voice	No support
NAM	2
E911 & Position Location	No support
TTY/Accessibility	No support
Mobile IP	Support
L (WLNP)	Support

## Transmitter Specifications

---

Type of multiplexing	EVDO and 1xRTT
Normal output power	7-10 dBm
TX Max power	24 dBm
Frequency range	Cellular CDMA : 824 MHz to 849 MHz, PCS CDMA : 1850 MHz to 1910 MHz
Frequency stability	Compliant with CDG1
Bandwidth	1.25 MHz
Occupied bandwidth	1.25 MHz
Modulation method	QPSK/HPSK
Waveform quality	0.94
Conducted spurious emission	Complies with Title 47, Part 24 of the FCC Rules
Common RF impedance	50 ohms

## Receiver Specifications

Type of receiving	EVDO and 1xRTT
Frequency range	Cellular CDMA : 869 MHz to 894 MHz, PCS CDMA : 1930 MHz to 1990 MHz
Bandwidth	1.25 MHz
Occupied bandwidth	1.25 MHz
Modulation method	QPSK/8PSK/16QAM
Receiver sensitivity	-104 dBm
Inter-modulation spurious response attenuation	Complies with CDG1
Common RF impedance	50 ohms

## Miscellaneous

DUI & driver	Windows 2000/XP
Support Materials	CD-ROM (PCS Connection Manager, User Guide), Start Here Guide
Certification & Approval	FCC (parts 2, 15, 22, & 24, SAR), CDG, etc.

## Hardware Specifications

---

Interface type	PCMCIA Type II PC Card
Common air interface	1xEVDO and 1xRTT
Channel spacing	Cellular CDMA : 30 kHz, PCS CDMA ; 50 kHz
Chip set	QUALCOMM™ MSM6800
Transmitting (max. data rate)	EVDO Rev. 0 : Forward link : 2.4 Mbps Reverse link : 153.6 Kbps EVDO Rev. A : Forward link : 3.1 Mbps Reverse link : 1.8 Mbps
Supply voltage	3.3 V
Battery	N/A
Charger (charging time)	N/A
Current consumption Sleep/idle Average in-use Max. (peak)	90 mA/200 mA 400 mA 800 mA
Communication ports	USB
Voice capability	No support

# Regulatory Information

---

## In This Section

---

- ◆ Regulatory Notices
- 

This section outlines important regulatory notices concerning your new Sprint Mobile Broadband Card.

# Regulatory Notices

---

This device is compliant with Parts 15 and 24 of the FCC Rules. Operation of this device is subject to the following two conditions:

1. This device may not cause harmful interference, and
2. This device must accept any interference received, including interference that may cause undesirable operations.

FCC guidelines stipulate that the antenna should be more than 1.5 cm (0.6") from all persons.

**FCC ID: PP4PX-500**

## CAUTION

Unauthorized modifications or changes not expressly approved by Sprint Communications Company L.P. could void compliance with regulatory rules and thereby your authority to use this equipment.

## WARNING (EMI) - United States FCC Information

This equipment has been tested and found to comply with the limits pursuant to Part 15 and 24 of the FCC Rules. These limits are designed to provide reasonable protection against harmful interference in an appropriate installation. This equipment generates, uses, and can radiate radio frequency energy and, if not installed and used in accordance with the instructions, may cause harmful interference to radio communication. However, there is no guarantee that interference will not occur in a particular installation.

If this equipment does cause harmful interference to radio or television reception, which can be determined by turning the equipment off and on, the user is encouraged to try to correct the interference by one or more of the following measures:

- Reorient or relocate the receiving antenna.
- Increase the separation between the equipment and receiver.
- Connect the equipment into an outlet on a circuit different from that to which the receiver is connected.
- Consult the dealer or an experienced radio/TV technician for help.

### **WARNING (EMI) - Canada**

This digital apparatus does not exceed the Class B limits for radio noise emissions from digital apparatus as set out in the interference causing equipment standard entitled “Digital Apparatus.” ICES-003 of the Department of Communications.

Cet appareil numérique respecte les limites de bruits radioélectriques applicables aux appareils numériques de Classe B prescrites dans la norme sur le matériel brouilleur: “Appareils Numériques,” NMB-003 édictée par le ministre des Communications.

If you have purchased this product under a United States Government contract, it shall be subject to restrictions as set forth in subparagraph (c)(1)(ii) of Defense Federal Acquisitions Regulations (DFARs) Section 252.227-7013 for Department of Defense contracts, and as set forth in Federal Acquisitions Regulations (FARs) Section 52.227-19 for civilian agency contracts or any successor regulations. If further government regulations apply, it is your responsibility to ensure compliance with such regulations.



# Safety and Terms & Conditions





# Safety and Notices

---

## In This Section

---

- ◆ Important Notice
  - ◆ Safety and Hazards
- 

This section outlines important liability and safety guidelines concerning your new Sprint Mobile Broadband Card.

## Important Notice

---

Because of the nature of wireless communications, transmission and reception of data can never be guaranteed. Data may be delayed, corrupted (i.e., have errors), or be totally lost. Although significant delays or losses of data are rare when wireless devices such as the Sprint Mobile Broadband Card PX-500 CDMA modem are used in a normal manner with a well-constructed network, they should not be used in situations where failure to transmit or receive data could result in damage of any kind to the user or any other party, including but not limited to personal injury, death, or loss of property. SPRINT SPECTRUM L.P. accepts no responsibility for damages of any kind resulting from delays or errors in data transmitted or received using the Sprint Mobile Broadband Card PX-500 CDMA modem, or for failure of the Sprint Mobile Broadband Card PX-500 CDMA modem to transmit or receive such data.

## Safety and Hazards

---

Do not operate the Sprint Mobile Broadband Card PX-500 in areas where blasting is in progress, where explosive atmospheres may be present, near medical equipment, life support equipment, or any equipment which may be susceptible to any form of radio interference. In such areas, the Sprint Mobile Broadband Card PX-500 **MUST BE POWERED OFF**. It can transmit signals that could interfere with this equipment.

Do not operate the Sprint Mobile Broadband Card PX-500 in any aircraft, whether the aircraft is on the ground or in flight. The Sprint Mobile Broadband Card PX-500 **MUST BE POWERED OFF**.

The driver or operator of any vehicle should not operate the Sprint Mobile Broadband Card PX-500 while in control of a vehicle. Doing so will detract from the driver or operator's control and operation of that vehicle. In some jurisdictions, operating such communications devices while in control of a vehicle is an offense.

---

### **WARNING!:**

This product contains a chemical known to the State of California to cause cancer.

This product contains a chemical known to the State of California to cause birth defects or other reproductive harm.

---



# Terms and Conditions

---

## In This Section

---

- ◆ **Terms and Conditions of Services**

---

This section contains the terms and conditions of service for your new Sprint Mobile Broadband Card.

# Terms and Conditions of Service

---

## Terms and Conditions of Services

(Effective September 1, 2005)

Thanks for choosing Sprint. These terms and conditions are part of your agreement with Sprint for PCS (CDMA) Services. Separate terms apply for any iDEN products or services.

Please note these terms may not be the most current version. You can get a current version of the terms on our Web site at [www.sprint.com](http://www.sprint.com) or by requesting a copy from us at **1-888-211-4PCS(4727)**.

A Para solicitar esta literatura en español, por favor contactar a **1-888-211-4PCS(4727)**.

**General.** This agreement (“Agreement”) covers the terms on which we agree to provide and you agree to accept any service or product we make available to you, including your wireless services, wireless devices, etc. (collectively “Services”). You accept this Agreement when you do any of the following: (a) provide your written or electronic signature; (b) accept through an oral or electronic statement; (c) attempt to or in any way use any of the Services; (d) pay for any Services; or (e) open any materials or package that says you are accepting when you open it. The Agreement includes the terms in this document together with the terms associated with the Services you select (as described in our marketing materials, e.g., service plan brochures, or on our Web site). You represent that you are at least 18 years old. In this document, we use the words “we,” “us,” “our” or “Sprint” to refer to Sprint Spectrum L.P. and its affiliates doing business as Sprint PCS.

**Agreement.** We may change the Agreement at any time with notice. Any changes to the Agreement are effective when we publish them. If you use our Services or make any payment to us on or after the effective date of the changes, you accept the changes. If we change a material term of the Agreement and that change has a material adverse effect on you, you may

terminate the Agreement without an Early Termination Fee by calling 1-888-567-5528 within 30 days after the changes go into effect. You understand and agree that taxes, Universal Service fees and other charges imposed by the government or based on government calculations may increase or decrease on a monthly basis, and that this paragraph does not apply to any increases in such taxes, Universal Service fees or other charges.

**Activating Service.** Before activation, we may check your credit and verify your identity. You must have and maintain satisfactory credit to receive and continue to receive Services. We may charge a nonrefundable activation fee, deposit, prepayment or other fee to establish or maintain Services.

**Term Commitments.** Unless we specifically tell you otherwise, our service plans require that you maintain service for a minimum term (“Term Service Plan”), usually 1 or 2 years. After satisfying this minimum term, your service plan will continue on a month-to-month basis unless you have agreed to extend the term for additional period(s). Certain service, promotional, or product offers may require that you agree to or extend a Term Service Plan. As discussed below, we may charge you an Early Termination Fee if you deactivate a Term Service Plan before the end of the term.

**Using Services.** You agree to not use our Services in an unlawful, fraudulent, or abusive manner. You may not resell or lease Services to anyone. Sprint is not responsible for any opinions, advice, statements, services applications or other information provided by third parties and accessible through our various Services, including the Internet. Neither Sprint, its vendors or licensors guarantees the accuracy, completeness, or usefulness of information that is obtained through these Services. You are responsible for evaluating such content. **You are also responsible for any use of our Services through any wireless device on your account including, but not limited to, use by children or minors. We strongly recommend that you closely monitor any such usage**

**Changing Services.** Changes to Services will generally be effective at the start of your next full invoicing cycle. In certain instances, the changes may take place sooner, in which case your invoice will reflect pro-rated charges. Certain changes may be conditioned upon payment of an Early Termination Fee or certain other charges.

**Termination of Services.** Consistent with this Agreement: (a) we may terminate Services at any time with notice to you and, in certain instances, without notice; and (b) you may terminate Services at any time with prior notice to us. Except as otherwise provided in this Agreement, IF YOU TERMINATE YOUR TERM SERVICE PLAN EARLY, OR WE DO SO FOR GOOD CAUSE, YOU WILL BE REQUIRED TO PAY THE APPLICABLE EARLY TERMINATION FEE ASSOCIATED WITH YOUR SERVICES. We will not charge an Early Termination Fee for deactivations consistent with our Return Policy or for service plans being provided on a month-to-month basis. If any Services are terminated before the end of your current invoicing cycle, we will not prorate charges to the date of termination, and you will not receive a credit or refund for any unused Services.

**Wireless Devices, Numbers, and Email Addresses.** We did not manufacture your wireless device and we are not responsible for any defects or for the acts or omissions of the manufacturer. The only warranties on your device are any limited warranties extended by the manufacturer directly to you or passed on to you through us. Your device may not accept Services directly from any other carrier. You do not have any rights to any number, email address, or other identifier we may assign to your device or account; you may not modify, change, or transfer any of these except as we allow or as allowed for by law. In certain instances, you may transfer your number from another carrier to us, or from us to another carrier. We do not guarantee that transfers to or from us will be successful. If you transfer your number away from us, the terms of this Agreement (e.g., Early Termination Fee, etc.) still apply. If a transfer to Sprint is not successful, you will be responsible for any discounts provided to you with the purchase of your device. See our printed in-store materials or

visit [www.sprint.com](http://www.sprint.com) for additional important information on number transfers.

**Coverage.** Available coverage areas for Services are generally identified in our mapping brochures and at [www.sprint.com](http://www.sprint.com). This may include coverage on our digital network (the “Sprint Nationwide PCS Network”) as well as coverage we make available to you through agreements with other carriers (“off network” or “roaming” coverage). **All coverage maps are high level representations of outdoor coverage and there are gaps in coverage within areas shown as covered on the maps. Coverage is not available everywhere, nor can we guarantee you will receive coverage at all times, or without interruptions or delays (e.g., dropped calls, blocked calls, etc.) in the coverage areas we identify. Actual coverage and quality of Services may be affected by conditions within or beyond our control, including network problems, software, signal strength, your equipment, structures (including buildings in which you may be located), atmospheric, geographic, or topographic conditions.**

**Roaming Coverage.** You are roaming anytime your phone indicates that you are roaming. Roaming coverage is only available with certain devices and, unless included as part of your Services, will result in additional charges. Roaming calls placed “manually” (through an operator or with a credit card) will always incur separate and additional charges. Depending on your phone settings, you may automatically roam if there is a gap or interruption in coverage within the Sprint Nationwide PCS Network coverage area and roaming coverage areas. See your phone guide for how to adjust phone settings. Certain features and services may not be available in roaming coverage areas (including PCS Vision, voicemail, call waiting, call forwarding, etc.).

**Charges.** Carefully review the terms of your Services. You will be assessed charges based on the terms of your Services including, without limitation, monthly recurring charges and charges based on actual usage (e.g., charges for long distance, roaming, call forwarding, directory assistance, etc.). Airtime and other time based usage charges are calculated from when your

device first initiates contact with a network until the network connection is broken, whether or not you were actually successful in connecting to the intended destination. However, you will not be charged for voice calls that ring and do not pick up, or if you get a busy signal. For voice calls received by your device, you are charged from the time shortly before the phone starts ringing until the call is terminated. You are charged for an entire voice call based on the time period in which the call is initiated. Partial minutes of use are rounded up to the next minute.

**Sprint PCS Vision Charges.** Vision usage is measured in bytes, not in minutes. Bytes are rounded up to kilobytes. Usage rounding occurs at the top of each clock hour while in a session and at the end of each session and is then charged to you based on the terms of your Services. Depending on your Services, usage may be charged against an allowance or on a fixed price per kilobyte. Usage charges may be rounded up to the next cent at monthly or other intervals. In certain instances, you may not know that your session has not ended. As long as your device is connected to our network, you will incur data usage charges. You will be charged for all data directed to the Internet address (or “IP address”) assigned to your device, regardless of who initiates the activity or whether your device actually receives the data. This includes, but is not limited to, the amount of data associated with the particular information/item (e.g. game, ringer, email, etc.), additional data used in accessing, transporting and routing this information/item on our network, data from partial or interrupted downloads, re-sent data, and data associated with unsuccessful attempts to reach Web sites or use applications. Based on these and a number of other factors (e.g., the specific application, network performance, etc.) data used and charged to you will vary widely, even for the same activity. Estimates of data usage for example, the size of downloadable files will not be accurate or a reliable predictor of actual usage. Your invoice will not separately identify the number of kilobytes attributable to your use of specific sites, sessions, or services.

**Taxes and Surcharges.** We invoice you for taxes, fees, and other charges levied by or remitted directly to federal, state, local, or foreign governments

including, without limitation, sales, gross receipts, Universal Service, use, and excise taxes. If you claim any tax exemption, you must provide us with a valid tax-exempt document. Tax exemptions are not applied retroactively. We also invoice you for surcharges that we collect and keep to pay for the costs of complying with government programs such as number pooling and portability, and Enhanced 911 service; these charges are not the taxes nor government imposed assessments.

**Invoicing & Payment.** Invoicing cycles and dates may change from time to time. Monthly recurring and related charges for Services are generally invoiced one invoicing cycle in advance. Other charges are invoiced soon after they are incurred. Most usage is generally applied to the invoicing cycle in which they are incurred, but in some instances may be applied to subsequent invoicing cycles. You are responsible for all charges associated with any device activated on your account, regardless of who used the device. You must pay all charges by the due date on the invoice. **Past due amounts accrue late charges until paid at the rate of 5% per month or at the highest rate allowed by law and may result in immediate suspension of your account.** If you agree to any auto-payment option through banking or credit account, we may initiate payment from the account for all amounts we invoice you without additional authorization or notice. Based on your credit or payment history, we may require certain forms of guaranteed payment as a condition of maintaining Services. If we invoice you for amounts on behalf of a third-party, payments received are first applied to amounts due to us. You may be charged additional fees for certain methods of payment and for payments denied by a financial institution. Acceptance of payments (even if marked "paid in full") does not waive our right to collect all amounts that you owe us.

**Disputed Charges.** Disputes concerning any charges invoiced must be raised within 60 days of the date of the invoice. You accept all charges not disputed in this time period. Disputes can only be made by calling or writing us as directed on your invoice.

**Account Spending Limit & Deposits.** We may impose an account spending limit (“ASL”) on any account without notice. We will notify you of an ASL based on your credit or payment history and may reduce the ASL at any time with prior notice. An ASL should not be relied on to manage usage on your account. We may suspend an account without prior notice when the account balance reaches the ASL, even if the account is not past due. Services can be restored upon payment of an amount that brings the account balance below the ASL and any past due amounts. If we require a deposit for you to establish or maintain an account, we will hold the deposit as partial guarantee of payment for Services. We may change the deposit amount at any time with notice for good reason. Except as we allow, a deposit may not be used to pay any invoice or delay payment. The deposit amount, the length of time we hold the deposit, and changes to the deposit amount are determined based on your credit and payment history. The rate of interest, if any, on the deposit is subject to change. We may mix deposits with our other funds. If your account is terminated for any reason, we may without notice apply your deposit to any outstanding charges. We may send any remaining deposit amounts to your last known address within 75 days after account termination. If the funds are returned to us, you may claim these funds for one year from the date of return. Any money held during this one-year period will not accrue interest for your benefit and are subject to a servicing fee charged against the balance. You forfeit any portion of the money left after the one-year period.

**Other Sprint PCS Vision Terms.** You will not receive voice calls while using Vision. Vision is not available for use with server devices or host computer applications, other systems that drive continuous heavy traffic or data sessions, or as substitutes for private lines or frame relay connections. Unlimited Vision plans/options may not be used with Sprint PCS phones or smart phones being used as a modem in connection with other equipment (e.g., computers, etc.) through use of connection kits or other phone-to-computer/PDA accessories, or Bluetooth or other wireless technology. We may terminate services without notice for any misuse. You may have access to certain games, ringtones, screen savers and other items on our Vision site

(“Premium Services”) that are available for an additional charge. You will be billed for Premium Service purchases on your Sprint PCS invoice based on the charges as specified at purchase. Subject to the terms of the content purchased, we may delete premium and non-premium items downloaded to any storage areas we may provide, including any pictures, games and other content. We may limit the amount of Premium Services you may purchase in a specific timeframe (month, week, day, or other time period).

**Voice Command.** Calls to 911 or similar emergency numbers cannot be placed through the Voice Command feature. See our printed in-store materials or visit [www.sprint.com](http://www.sprint.com) for additional important information on this option.

**Wireless Web.** Wireless Web Services may be available depending on your device and Service plan/option. This is not a Vision service. Usage is calculated on minutes used and generally deducts from your Service plan minutes. See our printed in-store materials or visit [www.sprint.com](http://www.sprint.com) for additional important information on this option.

**Lost or Stolen Equipment.** If your device is lost or stolen, please notify us immediately by calling **1-888-211-4PCS**. **You are responsible for all charges incurred before you notify us of the loss or theft.** You agree to cooperate reasonably with us in investigating suspected unlawful or fraudulent use.

**Messaging.** You may incur charges in accessing, sending, or receiving messages on your device. We may impose limits on the number of voicemail, text, email, or other messages that can be retained through your account. Indicators of messages on your device, including mailbox icons, may not always provide an up to date indication of new messages and you may at times need to manually reset or clear your mailbox indicator. Legitimate messages may be interrupted by software aimed at prevention of SPAM or similar messages.

**Caller ID.** If you do not want people you call to receive the number assigned to your phone, call us at **1-888-211-4PCS** for information about

automatic Caller ID blocking. The number assigned to your phone can be blocked on a per-call basis by dialing \*67 + Destination Number + TALK (or similar key). Caller ID blocking is not available when using Vision or Wireless Web services.

**TTY Access.** A TTY (also known as TDD or Text Telephone) is a telecommunications device that allows people who are deaf or hard of hearing, or who have speech or language disabilities, to communicate by telephone. TTY doesn't work with all devices. If you have a TTY-capable device, it may not function effectively, or at all, when attempting 911 calls and should not be relied on for such calls.

**Disclaimer of Warranties.** WE MAKE NO REPRESENTATIONS OF WARRANTIES, EXPRESS OR IMPLIED, INCLUDING (TO THE EXTENT ALLOWED BY LAW) ANY IMPLIED WARRANTY OF MERCHANTABILITY OR FITNESS FOR A PARTICULAR PURPOSE CONCERNING YOUR SERVICES OR WIRELESS DEVICE. WE DO NOT PROMISE UNINTERRUPTED OR ERROR-FREE SERVICES AND YOU AGREE TO HOLD US HARMLESS FOR ALL SUCH PROBLEMS.

**Limitation of Liability.** Neither we nor our vendors, suppliers, or licensors are liable for any damages arising out of or in connection with any: (a) act or omission by you, or another person or company; (b) providing or failing to provide Services, including deficiencies or problems with your wireless device, our network coverage or Services (e.g., dropped, blocked, interrupted calls/messages, etc.); (c) traffic or other accidents, or any health-related claims allegedly arising from the use of Services, any wireless devices or related accessories; (d) content or information accessed while using our Services, such as through the Internet; (e) interruption or failure in accessing or attempting to access emergency services from your phone, including through 911, E911 or otherwise; or (f) events due to factors beyond our control, including acts of God (including, without limitation, weather-related phenomena, fire or earthquake), war, riot, strike, or orders of governmental authority. **In the event we are found to be responsible to you for monetary damages relating to the Services (including wireless devices), you agree that any such damages will**

**not exceed the pro-rated monthly recurring charge for your Services during the affected period.**

**NO CONSEQUENTIAL OR OTHER DAMAGES.** UNDER NO CIRCUMSTANCES ARE WE LIABLE FOR ANY INCIDENTAL, CONSEQUENTIAL, PUNITIVE OR SPECIAL DAMAGES OF ANY NATURE WHATSOEVER ARISING OUT OF OR IN CONNECTION WITH PROVIDING OR FAILING TO PROVIDE SERVICES, PHONES OR OTHER EQUIPMENT USED IN CONNECTION WITH THE SERVICES, INCLUDING, WITHOUT LIMITATION, LOST PROFITS, LOSS OF BUSINESS, OR COST OF REPLACEMENT PRODUCTS AND SERVICES. THIS SECTION SURVIVES TERMINATION OF THIS AGREEMENT.

**MANDATORY ARBITRATION OF DISPUTES.** INSTEAD OF SUING IN COURT, YOU AND SPRINT AGREE TO ARBITRATE ANY AND ALL CLAIMS, CONTROVERSIES OR DISPUTES AGAINST EACH OTHER ARISING OUT OF OR RELATING TO THIS AGREEMENT, INCLUDING, WITHOUT LIMITATION, THE SERVICES, ANY PHONES/EQUIPMENT, OR ADVERTISING, EVEN IF IT ARISES AFTER YOUR SERVICES HAVE TERMINATED, AND INCLUDING CLAIMS YOU MAY BRING AGAINST SPRINT'S EMPLOYEES, AGENTS, AFFILIATES OR OTHER REPRESENTATIVES, OR THAT SPRINT MAY BRING AGAINST YOU ("CLAIMS"). THE FEDERAL ARBITRATION ACT APPLIES TO THIS AGREEMENT AND ITS PROVISIONS, NOT STATE LAW, GOVERN ALL QUESTIONS OF WHETHER A CLAIM IS SUBJECT TO ARBITRATION. THIS PROVISION DOES NOT PREVENT EITHER YOU OR SPRINT FROM BRINGING APPROPRIATE CLAIMS IN SMALL CLAIMS COURT, BEFORE THE FEDERAL COMMUNICATIONS COMMISSION OR A STATE PUBLIC UTILITIES COMMISSION.

YOU AND SPRINT FURTHER AGREE THAT NEITHER SPRINT NOR YOU WILL JOIN ANY CLAIM WITH THE CLAIM OF ANY OTHER PERSON OR ENTITY IN A LAWSUIT, ARBITRATION OR OTHER PROCEEDING; THAT NO CLAIM EITHER SPRINT OR YOU HAS AGAINST THE OTHER SHALL BE RESOLVED ON A CLASS-WIDE BASIS; AND THAT NEITHER SPRINT NOR YOU WILL ASSERT A CLAIM IN A REPRESENTATIVE CAPACITY ON BEHALF OF ANYONE ELSE. IF FOR ANY REASON THIS ARBITRATION PROVISION DOES NOT APPLY TO A CLAIM, WE AGREE TO WAIVE TRIAL BY JURY.

A single arbitrator engaged in the practice of law will conduct the arbitration. The arbitration will be filed with and the arbitrator will be selected according to the rules of either JAMS or the National Arbitration Forum ("NAF"), or, alternatively, as we may mutually agree. We agree to act in good faith in selecting an arbitrator. The arbitration will be conducted by and under the then-applicable rules of JAMS or NAF, wherever the arbitration is filed or, if the arbitrator is chosen by mutual agreement of the parties, the then-applicable rules of JAMS will apply unless the parties agree otherwise. All expedited procedures prescribed by the applicable rules will apply. We agree to pay our respective arbitration costs, except as otherwise required by rules of JAMS or NAF, as applicable, but the arbitrator can apportion these costs as appropriate. The arbitrator's decision and award is final and binding, and judgment on the award may be entered in any court with jurisdiction.

If any party files a judicial or administrative action asserting a claim that is subject to arbitration and another party successfully stays such action or compels arbitration, the party filing that action must pay the other party's costs and expenses incurred in seeking such stay or compelling arbitration, including attorneys' fees.

If any portion of this Mandatory Arbitration of Disputes section is determined to be invalid or unenforceable, the remainder of the Section remains in full force and effect.

**Miscellaneous.** You may notify us by calling us at **1-888-211-4PCS**, or use that number to get our current address for written notice. We may send you notice to your last known address in our invoicing records, or by calling leaving you a voice message on your wireless device or home phone. Properly addressed written notice is effective three days after deposit in the U.S. mail, postage prepaid. This Agreement is governed by and must be construed under federal law and the laws of the State of Kansas, without regard to choice of law principles. If either of us waives or fails to enforce any requirement under this Agreement in any one instance, that does not waive our right to later enforce that requirement. If any part of this

Agreement is held invalid or unenforceable, the rest of this Agreement remains in full force and effect. Section headings are for descriptive, non-interpretive purposes only. You may not assign this Agreement to any other person or entity without our prior written approval. This Agreement (including any referenced documents and attachments) makes up the entire agreement between us and replaces all prior written or spoken agreements.



# Index

## A

- Activating the Card 21
- Activation Wizard 49
- Alert Log 49, 67

## C

- CDMA Networks 4
- Close Button 30
- Connection History 50, 66
- Connection Manager - See Sprint PCS Connection Manager Software
- Connection Status 31
- Connections
  - Establishing and Terminating 37

## D

- Device Info & Diagnostics 51, 67

## E

- Environmental Specifications 78
- Establishing Connections 37

## G

- GO Button 35

## H

- Hardware Specifications 82

## I

- Indicator Area Icons 34
- Installing the Card 11-22

## L

- Links 45, 52
- Lock Code 42

## M

- Mechanical Specifications 78
- Menu Options 47-53
  - Overview 48
- Menu Tools 66
- Minimize Button 30

## P

- Package Contents 5

## R

- Receiver Specifications 81
- Regulatory Notices 84
- Reinstalling the Driver 59
- Resource Conflicts 64

## S

- Safety and Hazards 91
- Software Specifications 79
- Software Updates 52
- Sprint Mobile Broadband Card
  - Activating 21
  - Care and Maintenance 9
  - Inserting and Removing 17
  - Installing 11-22
    - Software Overview 8
  - Sprint PCS Connection Manager Software 25-45
    - Indicator Area 33
    - Installing 15

- Interface 29
- Menu Options 38
- Settings 39
- Software Updates 40
- Starting 27
- Window (illus.) 28
- Sprint Power Vision
  - 41, 71-74
- System Requirements 13

## T

- Taskbar Icons 36
- Terminating Connections
  - 37
- Terms and Conditions 93
- Transmitter Specifications
  - 80
- Troubleshooting 55-68

## U

- User Name 72

## W

- Web
  - Launching 72
- Welcome i

