

# NetPath™ 2000 Wireless Access Device

Broadband Access Solutions

## HIGHLIGHTS

- Ideal solution for backup links, portable connections, and supporting remote data links
- Plug-and-play PC CARD WAN supports multiple wireless card technologies (EVDO, EDGE, UMTS/HSDPA)
- Create secure networks with the internal VPN agent
- Routing, NAT and DHCP
- User-friendly webserver interface
- Supports VPN pass-through for existing secure networks
- Port address translation to enable remotes services
- Extensive user diagnostics to enable rapid fault isolation
- IP Passthru enables wireless transparency to existing wired networking equipment



In today's ultra-competitive business climate, business customers need and demand access to data networks – whether it is access to their corporate data network or access to the Internet. The ability to share data and access information in real time is essential. Simply put – there's no time for downtime.

The NetPath™ 2000 is a high-speed wireless broadband solution that enables small businesses and enterprises to connect their remote offices, retail locations, and mobile operations to their corporate networks via high-speed wireless technology. The NetPath 2000 offers a reliable approach for link redundancy in case wire lines are disrupted; it can quickly enable users to set up their networks in portable or remote locations, and can serve as a flexible POS client.

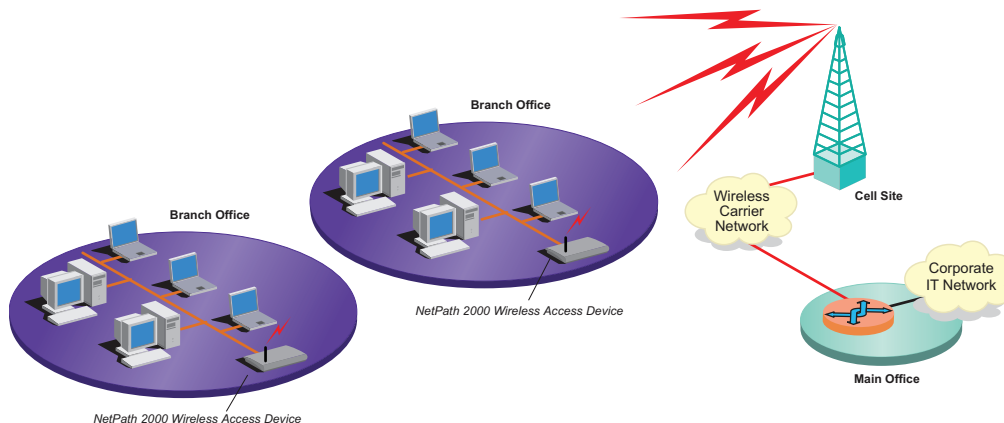
Designed for access to any type of high-speed wireless network, NetPath 2000 features a plug-and-play PCMCIA WAN slot for most 3G wireless cards (EVDO, 1x RTT, UMTS, Edge, and GPRS) Additionally it supports full network APNs.

The NetPath 2000 provides routing to support a wide range of applications including Internet access, enterprise networking, and VPN pass-through. An internal VPN client option enables full IPSEC security capability that is interoperable with a variety of VPN servers including Cisco, Nortel, and Microsoft. The product is easy to install with auto-synchronization to the wireless network and easy to configure and manage via a Web-based Graphical User Interface (GUI).



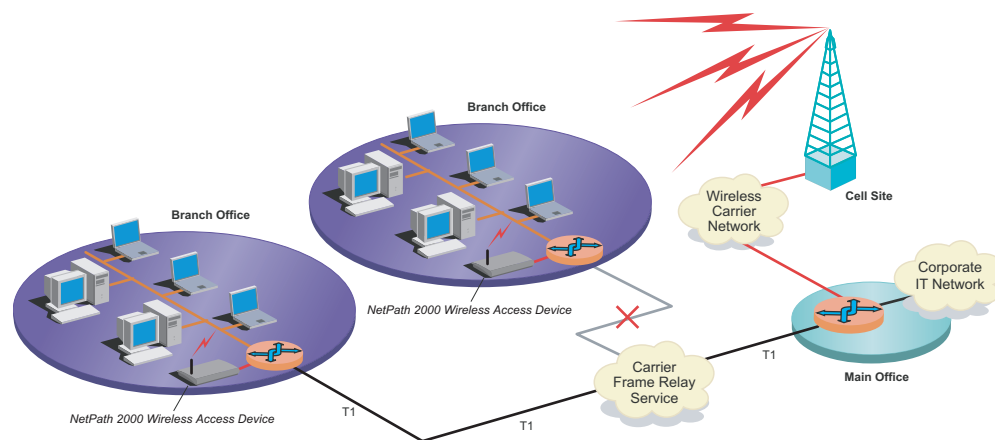
## Wireless Data Access

The Verilink NetPath 2000 broadband wireless access device is an ideal solution for broadband access over UMTS, Edge, and GPRS wireless networks where wireline facilities are not available or where wireless access is more cost effective than a 56k Frame Relay (DDS) or ISDN.



## Disaster Recovery

The Verilink NetPath 2000 broadband wireless access device is an ideal solution for building redundancy into mission-critical distributed network applications. In case of a primary service outage over wireline connections such as T1 or DSL, the NetPath 2000 provides continuous broadband service over UMTS, Edge, and GPRS wireless network connections. It is more cost effective than a 56k Frame Relay (DDS) or ISDN as a back up service.



## HARDWARE INTERFACES

- Ethernet Port 0 – Local network Interface RJ-45 auto-negotiation of 10/100Mbps links
- Ethernet Port 1 – Local network Interface RJ-45 auto-negotiation of 10/100Mbps links
- DC Power with external supply provided
- IEEE802.3af POE support

## MANAGEMENT

- Web-based GUI
- Remote and local access
- Full configuration control, status and statistics
- RSSI (signal strength) capabilities
- Telnet, FTP, TFTP
- SNMP Monitoring
- RFC1213 MIB-II
- Secure Management Access
- Access via SSH
- Local and remote SW update capability

## ROUTING AND WIRELESS NETWORKING FEATURES

- Routes IP packets between the wireless network card and both Ethernet ports
- IP Passthru
- NAT support with capability to disabling for public address usage (applicable to custom APNs)
- Programmable Keep-alive capabilities permits user to assure link operation in units from 1 to 30 minutes or disable
- DHCP Support for management and network interfaces
- VPN termination supports up to 4 tunnels; optional interoperable with Cisco, Nortel, and Microsoft VPN servers. Supports automatic keying authentication using 3DES tunnel encryption authenticated using MD5 or SHA, and IPComp per RFC2393
- VPN pass-through support
- Multiple Profile Support (APNs) to include proxy, public, Internet, and customer-specific
- Port Address Translation (PAT or Port Forwarding) up to 8 rules

## WIRELESS NETWORK INTERFACES

- 1xRTT, EVDO, GPRS, EDGE, UMTS, HSDPA
- Audiovox 5220
- Kyocera KPC650
- Sierra Wireless AirCard 580
- Sierra Wireless AC775 EDGE
- Novatel V620
- Novatel Merlin U520 UMTS
- Sony Ericsson GC83 EDGE

## ENVIRONMENT AND REGULATORY

- 0 to 50 degrees centigrade
- 0 to 90% humidity, non-condensing
- FCC Part 15 Class B requirements
- UL 60950-1

## WARRANTY AND SUPPORT

- Five-year warranty

©2005 Verilink Corporation. Verilink and the Verilink logo are registered trademarks of Verilink Corporation. Other brands or products mentioned may be trademarks or registered trademarks of their respective owners.

This document does not create any express or implied warranty about Verilink or about its products or services. Verilink's sole warranty is contained in its product warranty. The end-user documentation shipped with Verilink products constitutes the sole specifications referred to in the product warranty. Verilink has made reasonable efforts to verify that the information contained herein is accurate, but Verilink assumes no responsibility for its use or any infringement of patents or other rights of third parties that may result. The customer is solely responsible for verifying the suitability of Verilink's products for its use. Specifications are subject to change without notice.